



Forest TMfx

Heavy Commercial Wood Effect Sheet Vinyl Flooring



INTRODUCTION

The Forest fx collection of wood effect vinyl sheet floorcoverings is specifically designed for a wide range of commercial interiors. The contemporary and creative timber designs are ideal for education, healthcare, office, retail and leisure sectors, developed and presented in a practical, resilient and hygienic product construction.

The collections eclectic mix of traditional warm oak planks and cooler grey timbers creates an authentic wood palette that can be matched with a wide variety of interior design schemes, whilst the addition of two parquet effect designs adds to the collections versatility.

The durability of Forest fx lends itself perfectly to the demands of commercial interiors, leading with the key advantages of aesthetics and performance, with the added flexibility to meet corporate design schemes. Unique floor designs can easily be achieved by incorporating inlaid features and logos, managed by Polyflor's in house design team.

To further enhance the floorcovering, Forest fx features a high quality, cross-linked polyurethane reinforcement (PUR) providing a low cost, polish-free maintenance regime for the lifetime of the product.

Forest fx is 100% recyclable and achieves BRE A+ certification for major use areas based on a life cycle analysis approach over a building life of 60 years. All these qualities make the collection environmentally preferable whilst meeting decorative, practical, budgetary and maintenance objectives.



°Refer to BRE Global ratings on www.greenbooklive.com



Forest *fx*

3106 Parish Oak Parquet

Plank size
76.2 x 288.6mm



Forest *fx*

3113 Blanched Oak

Plank size
200 x 1000mm



Forest *fx*

3104 Oslo Oak

Plank size
167 x 1500mm



Featured alongside 3105 Alloyed Timber



Forest *fx*

3103 Rock Salt Oak

Plank size
220 x 1500mm



Forest *fx*

3101 Grey Sawmill Oak

Plank size
180 x 1000mm



Forest *fx*

3105 Alloyed Timber

Plank size
167 x 1500mm



Forest *fx*

2990 Oiled Oak

Plank size
167 x 1500mm



Also available
in acoustic



Forest *fx*

3109 Newport Oak

Plank size
167 x 1500mm





Forest *fx*[™]

3102 Rural Deckwood

Plank size
180 x 1000mm



Forest *fx*

3380 American Oak

Plank size
100 x 1000mm



Also available
in acoustic



Forest *fx*

3100 Classic Oak

Also available
in acoustic



Plank size
167 x 1500mm



Forest *fx*

3330 Rustic Oak

Plank size
84 x 332/664mm



Also available
in acoustic



Featured alongside Polysafe Modena Copal

Forest *fx*

3108 Eton Oak Parquet

Plank size
76.2 x 288.6mm



Forest *fx*

3340 European Oak

Plank size
100 x 1000mm



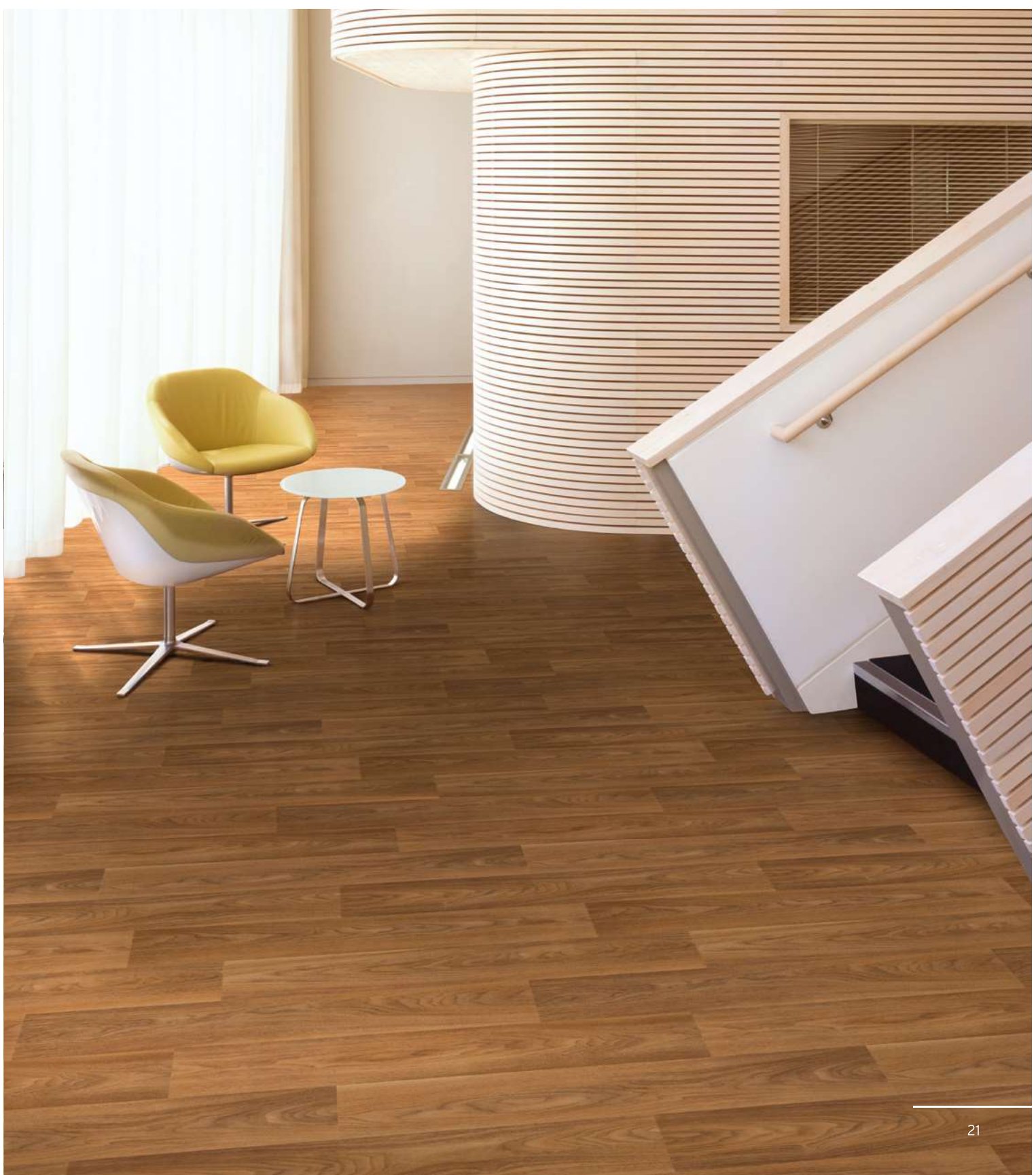
Also available
in acoustic



Forest *fx*

3120 French Walnut

Plank size
167 x 1000mm





Forest *fx*[™]

3150 Smoked Oak

Also available
in acoustic



Plank size
167 x 1500mm

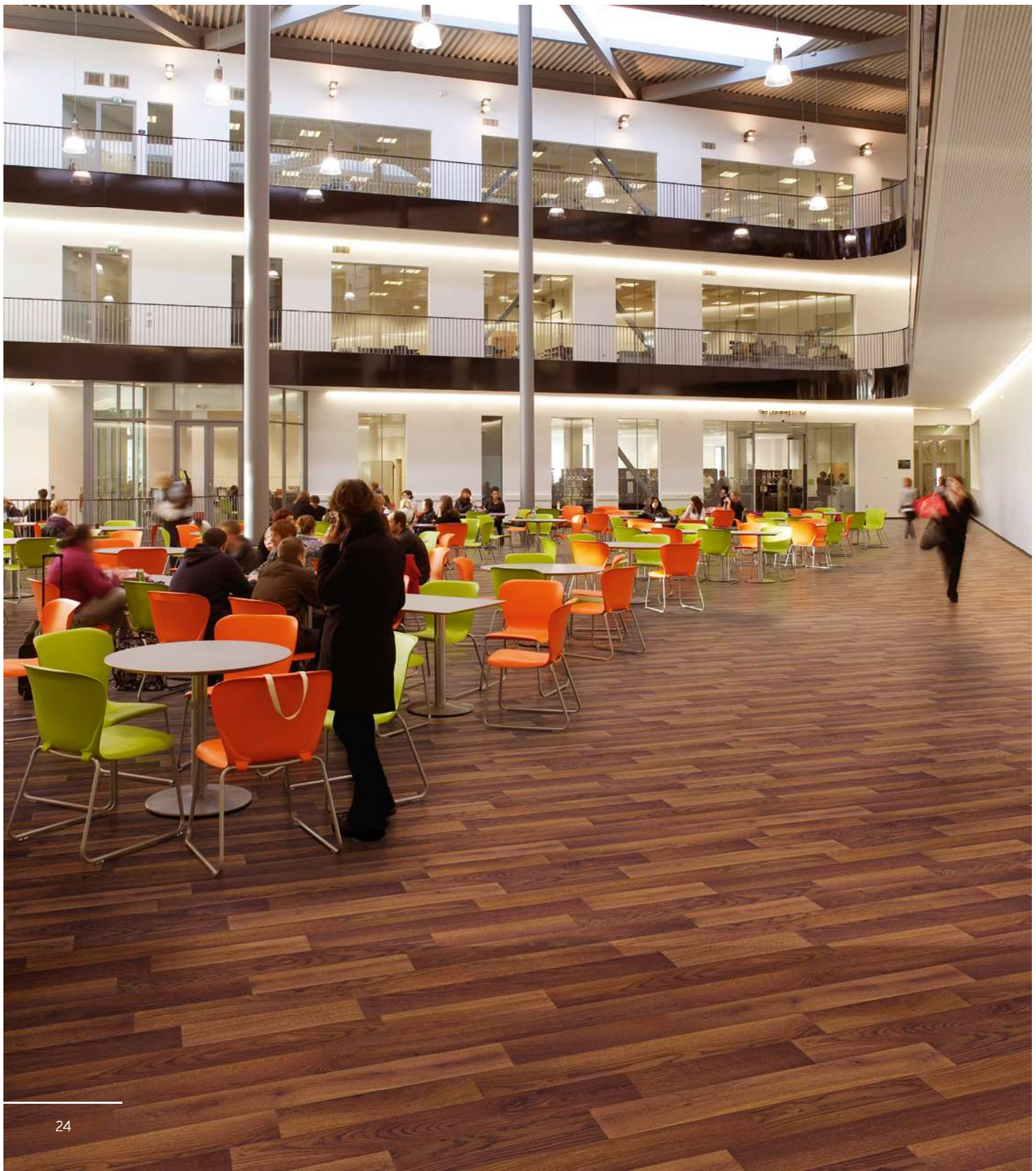


Featured alongside 2990 Oiled Oak

Forest *fx*

3360 Mahogany

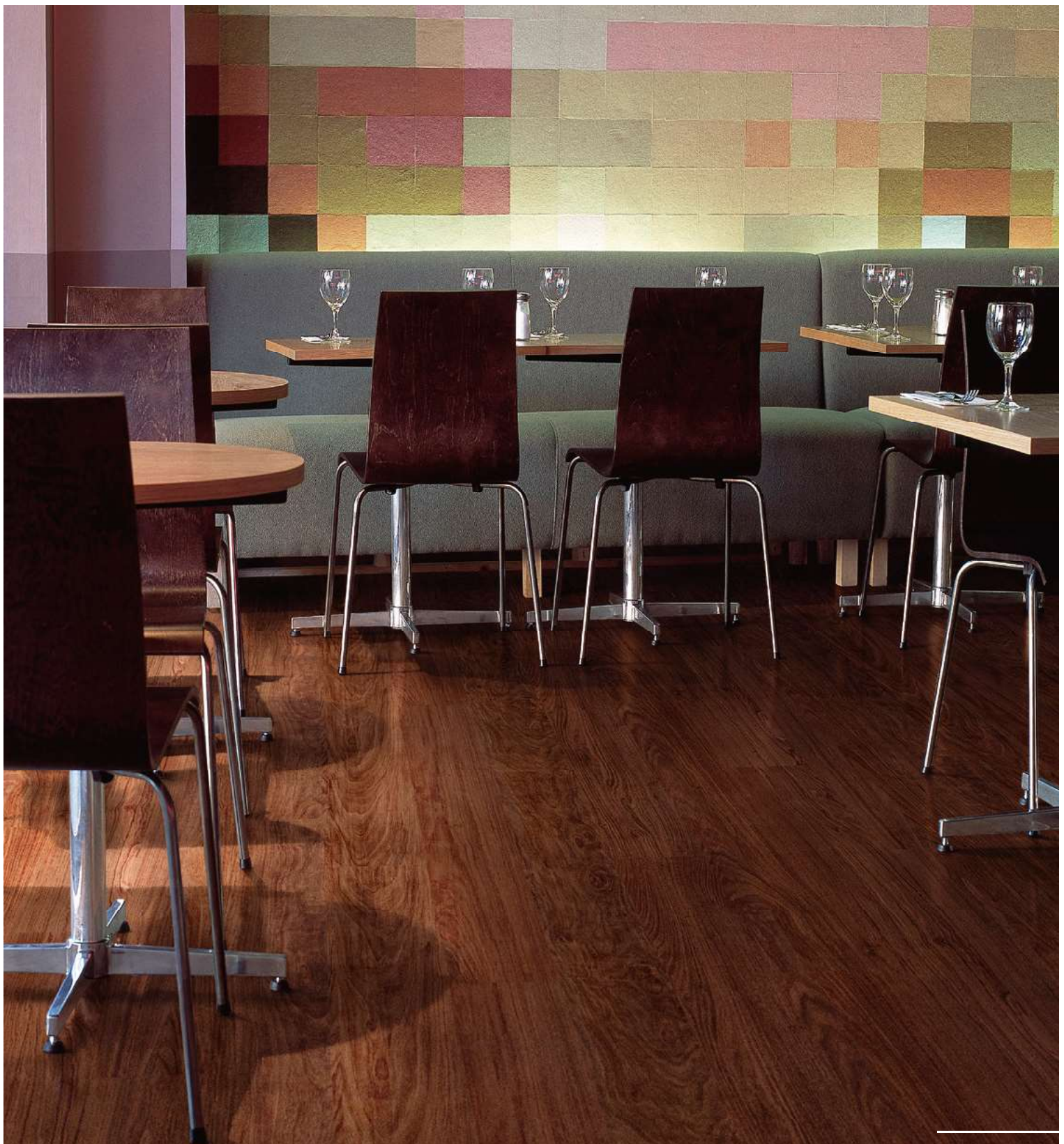
Plank size
84 x 332/664mm



Forest *fx*

3990 Brazilian Walnut

Plank size
133 x 1000mm



COLLECTION

Forest fx represents the natural beauty and sophistication of wood in a practical and durable vinyl sheet format. This contemporary and wide-ranging palette is further enhanced by a variety of plank sizes, each carefully designed for natural authenticity.



3106 Parish Oak Parquet w/r 9841
Plank size: 76.2 x 288.6mm LRV 31.7



3113 Blanched Oak w/r 3113
Plank size: 200 x 1000mm LRV 41.7



3104 Oslo Oak w/r 9829
Plank size: 167 x 1500mm LRV 31.9



3103 Rock Salt Oak w/r 3103
Plank size: 220 x 1500mm LRV 37.0



3101 Grey Sawmill Oak w/r 3101
Plank size: 180 x 1000mm LRV 39.9



3105 Alloyed Timber w/r 9841
Plank size: 167 x 1500mm LRV 24.3



2990 Oiled Oak w/r 2990
Plank size: 167 x 1500mm LRV 35.0



3109 Newport Oak w/r 9838
Plank size: 167 x 1500mm LRV 29.9



3102 Rural Deckwood w/r 3102
Plank size: 180 x 1000mm LRV 27.6



3380 American Oak
Plank size: 100 x 1000mm

w/r 3380
LRV 35.7



3100 Classic Oak
Plank size: 167 x 1500mm

w/r 3330
LRV 28.6



3330 Rustic Oak
Plank size: 84 x 332/664mm

w/r 3330
LRV 29.2



3108 Eton Oak Parquet
Plank size: 76.2 x 288.6mm

w/r 9822
LRV 23.6



3340 European Oak
Plank size: 100 x 1000mm

w/r 3340
LRV 21.0



3120 French Walnut
Plank size: 167 x 1000mm

w/r 3120
LRV 17.0



3150 Smoked Oak
Plank size: 167 x 1500mm

w/r 3150
LRV 14.0



3360 Mahogany
Plank size: 84 x 332/664mm

w/r 3360
LRV 10.1



3990 Brazilian Walnut
Plank size: 133 x 1000mm

w/r 3990
LRV 7.8



Environment

Polyflor have demonstrated a high level of commitment over the years to minimising our impact on the environment without compromising the performance benefits of our high quality floorcoverings.

There can be few materials better suited to recycling than vinyl flooring. Forest fx is 100% recyclable, and can be recycled many times over. Polyflor continually works on developing new products and technologies, and constantly evaluates production methods to further minimise our impact on the environment.



Maintenance & Hygiene

The incorporation of a polyurethane reinforcement into the Forest fx collection helps protect the floorcovering by resisting soiling and scuffing. Combined with the superior closed surface finish, this enhanced protection allows the use of a polish-free maintenance regime for the lifetime of the flooring.

This leads to an overall maintenance cost saving of 48% over a 20+ year life when compared to untreated heterogeneous flooring, and fewer cleaning chemicals and reduced power requirements mean reduced environmental impact.

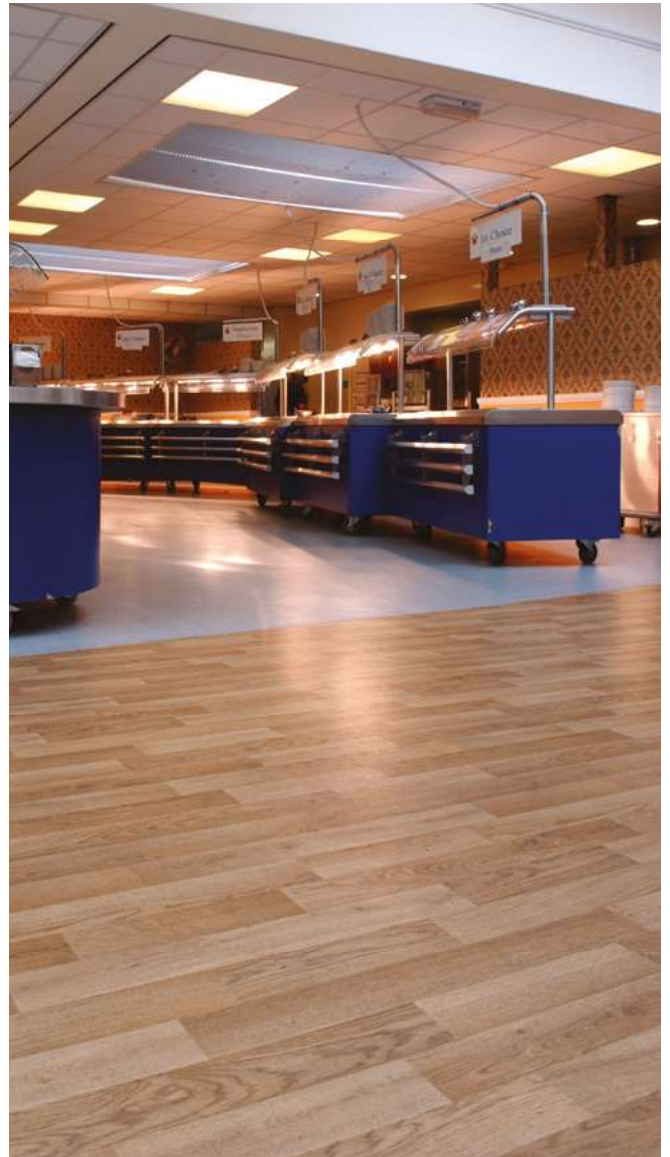


Design Service

Polyflor has over 20 years experience in delivering floor design solutions. From simple tile patterns, borders and compass designs, to custom cut motifs.

We have helped architects and designers to realise stunning floors for hundreds of buildings, and our designers provide support throughout the project offering visuals, colour and product advice.

There is virtually no limit to the shapes, patterns or pictures you can create. We offer the precision and the flexibility of waterjet cutting to produce any design you require. School badges, information signs, corporate motifs; the possibilities are endless.



Fit for Purpose

In some large scale commercial interiors where the area is dual-purpose, the use of different types of floorcovering can help outline each zone to guide users.

For interiors where slip resistance is vital but only in certain zones, for example a school canteen, combining Polysafe slip resistant flooring in the food serving area with Forest fx wood effect in the dining area can help distinguish each of these zones, ensure Health & Safety is adhered to, and create a welcoming dining room for the children to relax in.





Website

For detailed product and technical information on all commercial flooring collections within the Polyflor portfolio, visit polyflor.com where you can browse installation galleries, product specifications, brochures and all the latest news.



Free Sample Service

Polyflor provide a complementary product sample service, to ensure you find the exact floor you are looking for. To order your free samples of any of the Forest fx shades either visit the Polyflor website at polyflor.com, or call the dedicated Polyflor Samples Hotline on +44 (0)161 767 2551.

Contact Us

For general information on your specific project, speak with your local Polyflor provider. If you require detailed technical data, contact Polyflor Customer Technical Services on +44 (0)161 767 1912 or email tech@polyflor.com.

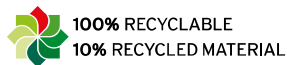
For details of international availability visit polyflor.com and follow the Contact Us link.

	Standards	Forest fx
Type of Floorcovering	EN 649/ISO 10582	Heterogeneous
Product Enhancement		PUR
Gauge	EN 428/ISO 24346	2.0mm
Wear Layer	EN 429/ISO 24340	0.70mm
Roll Size	EN 426/ISO 24341	2m x 20m = 40m ²
Total Weight	EN 430/ISO 23997	2700g/m ²
General Performance	EN 649 ISO 10582	Conforms Conforms
Use Area	EN 685/ISO 10874	23, 34, 43
Resistance to Chemicals	EN 423	Excellent chemical resistance
Reaction to Fire	EN 13501-1	Class Bfl-S1
Abrasion Resistance	EN 649 EN ISO 10582	Group T Type I
Slip Resistance*	EN 13893 AS/NZS 4586 DIN 51130	Class DS (dry condition) R10 R10
Residual Indentation	ISO 24343-1	<0.10mm
Castor Chair (continuous use)	EN 425/ISO 4918	Suitable
Dimensional Stability	EN 434/ISO 23999	<0.40%
Flexibility	EN 435/ISO 24344	(Method A) Pass 20mm Ø
Thermal Conductivity	-	Suitable for underfloor heating (max 27°C)
Electrical Behaviour (body voltage)	EN 1815	≤2kV Classified as 'antistatic'
Light Fastness	ISO 105-B02	(Method 3) ≥6
VOC Emissions	Indoor Air Comfort GOLD AgBB VOC test Floorscore Swedish B.P.D. (FLEC test) GBCA/NZGBC Green Star IEQ-VOC	Eurofins certified product Very low emissions Certified Best Class Compliant
Responsible Sourcing	BES 6001	Very Good

Environmentally Preferable Flooring - Polyflor Forest fx PUR achieves a BRE Global A+ rating (ENP 415) in the Green Guide to Specification in use areas such as education and healthcare and is GreenTag LCA Rate certified with GreenRate level A - Silver Plus. Generic EN 15804 Environmental Product Declaration (EPD) available on request. Recyclable via the Recofloor scheme. Visit www.polyflor.com/sustainability.

Hygiene - All Polyflor commercial sheet vinyl ranges provide a continuous, impervious and hygienic flooring solution which can be confidently cleaned in accordance with recommended maintenance procedures and approved maintenance products. The implementation of an effective cleaning regime is the most important defence against infection.

*For safety flooring with sustainable wet slip resistance, refer to Polysafe ranges.





POLYFLOR™ INTERNATIONAL

Australia

Polyflor Australia
Tel: +61 3 9215 4400
Tel: 1800 777 425
E-mail: sales@polyflor.com.au

Canada

Polyflor Canada Inc.
Tel: +1 905 364 3000
E-mail: sales@polyflor.ca

China

Polyflor Hong Kong
Tel: +(852) 2865 0101
E-mail: info@polyflor.com.hk

France

James Halstead France SAS
Tel: +33 (0) 8 20 20 32 11
E-mail: info@jhfrance.fr

Germany

objectflor Art und Design Belags GmbH
Tel: +49 (0) 2236 966 330
E-mail: info@objectflor.de

India

Polyflor India Pvt Ltd
Tel: +91 22 4023 2485
E-mail: info@polyflor.co.in

Ireland

Polyflor Ireland
Tel: +353 (1) 864 9304
E-mail: salesireland@polyflor.com

New Zealand

Polyflor New Zealand
Tel: +64 9 269 1111
Tel: 0800 765 935
E-mail: sales@polyflor.co.nz

Norway

Polyflor Nordic
Tel: +47 23 00 84 00
E-mail: firmapost@polyflor.no

Poland

Polflor Sp. Z o.o.
Tel: +48 (0) 61 820 3155
E-mail: polyflor@polflor.com.pl

Russia

Polyflor Contract Ltd
Tel: +7 (812) 332 42 02
E-mail: info@polyflor.ru

South Africa

Poly Sales Africa (Pty.) Ltd
Tel: +27 (0) 11 609 3500
E-mail: info@polyflor.co.za

Sweden

FalckDesign AB
Tel: +46 (0) 300 15820
E-mail: info@falckdesign.com

www.polyflor.com

POLYFLOR™ UK

POLYFLOR LTD, PO BOX 3 RADCLIFFE NEW ROAD WHITEFIELD MANCHESTER M45 7NR UK

UK SALES DIRECT: +44 (0)161 767 1122

UK FAX: +44 (0)161 767 1128

RECEPTION: +44 (0)161 767 1111

UK SAMPLE REQUESTS: +44 (0)161 767 2551

EXPORT FAX: +44 (0)161 767 1166

E-MAIL: INFO@POLYFLOR.COM

EXPORT SALES DIRECT: +44 (0)161 767 1913

TECHNICAL SUPPORT: +44 (0)161 767 1912

WEBSITE: WWW.POLYFLOR.COM

